

Incentivising nature-based solutions to the climate crisis.

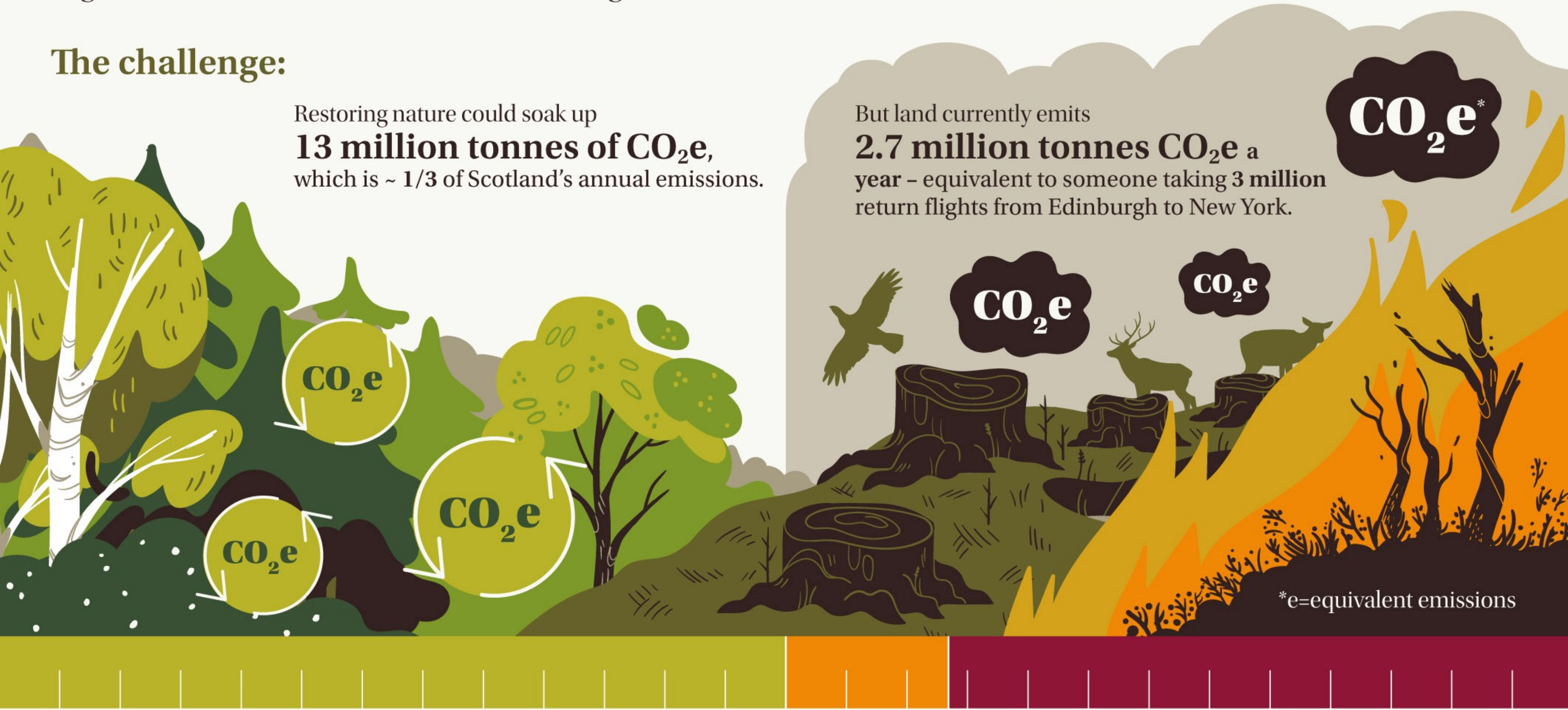
Land in Scotland is emitting more carbon than the country's international aviation and shipping. This is due to changes in carbon stocks, drainage, loss of soil organic matter and fires. It's time for change.



The challenge:

Restoring nature could soak up **13 million tonnes of CO₂e**, which is ~ 1/3 of Scotland's annual emissions.

But land currently emits **2.7 million tonnes CO₂e** a year – equivalent to someone taking 3 million return flights from Edinburgh to New York.



We've got a bold idea:

THE CARBON EMISSIONS LAND TAX

This would be applied to landholdings over 1,000 hectares according to estimated emissions – incentivising behaviour change amongst landowners to maximise natural carbon capture.



Removing 13 MT CO₂e:



Revenues generated could fund **community-based climate initiatives**

