

# Quinag and Kylesku

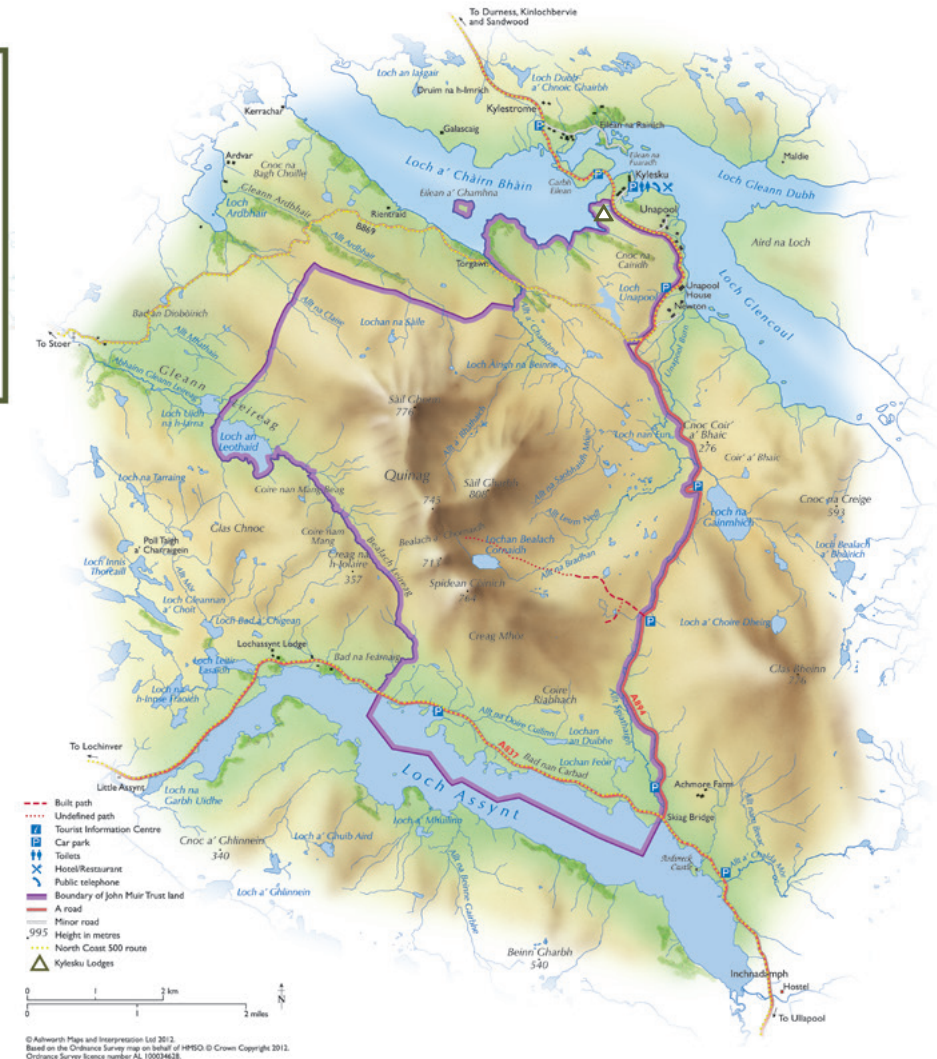
JOHN MUIR TRUST

# Exploring Quinag

Quinag is a popular hill with walkers and the main footpath is easily accessed from the car park on the east side of the A894. Please follow the newly restored footpath up the ridge – avoiding the temptation to take a shortcut across the fragile and easily eroded peat. Weather conditions change quickly in coastal mountain environments, please come prepared and dress appropriately.

The summits offer stunning vistas of wild Scotland on a clear day, looking west across the Minch to the Isle of Lewis and north to the mountains of north-west Sutherland.

The map on this leaflet is for illustrative purposes only and is not intended for navigation.



[johnmuirtrust.org](http://johnmuirtrust.org)